

MAXIMUS MVX RANGE, BRACKETS



NXWBS1

WALL MOUNT BRACKET

Made of AISI 316L electropolished stainless steel

Load rating: 45kg (99lb)

Dimensions: 371x186mm (14.6x7.3in)

Suitable for: NXCOL, NXCW



NXWBS1

NXCOL

POLE MOUNT ADAPTOR

Made of AISI 316L electropolished stainless steel

For pole diameters: from 110mm (4.3in) up to 150mm (5.9in)

Load rating: 50kg (110lb)

Dimensions: 180x196mm (7.0x7.7in)



NXCOL

NXCW

CORNER MOUNT ADAPTOR

Made of AISI 316L electropolished stainless steel

Load rating: 50kg (110lb)

Dimensions: 180x291mm (7x11.5in)



NXCW

MHXFWCA

PARAPET MOUNTING BRACKET

Made of AISI 316L electropolished stainless steel

Load rating: 40kg (88lb)

Dimensions: Ø 101.6mm (4in)

Compatible with the bracket: NXFWBT



MHXFWCA

NXFWBT

EXTENSION BRACKET FOR PARAPET MOUNTING

Made of AISI 316L electropolished stainless steel

Load rating: 70kg (154lb)

Height: 124mm (4.9in)

Suitable for MHXFWCA ball joint

Suitable to MVX housings only if coupled with MHXFWCA joint



NXFWBT

TECHNICAL DATA

NXWBS1

MECHANICAL

Bracket for NTC, NXM36, NXM, NTM, NXW, NTW

Bracket for MVX, MVXT, MVXHD

Suitable for: NXCOL, NXCW

Made of AISI 316L electropolished stainless steel

Load rating: 45kg (99lb)

Dimensions: 371x186mm (14.6x7.3in)

Unit weight: 2.5kg (5.5lb)

PART NUMBER

NXWBS1 AISI 316L stainless steel wall bracket with joint

PACKAGE

Model Number	Weight	Dimensions (WxHxL)	Master carton
NXWBS1	2.8kg (6.2lb)	16x18.5x46cm (6.3x7.3x18.1in)	8

NXCOL

MECHANICAL

Suitable for NXWBS1, NXWBL, NXWBPTH1

Made of AISI 316L electropolished stainless steel

For pole diameters 110-150mm (4.3-5.9in)

Load rating: 50kg (110lb)

Unit weight: 3.3kg (7.3lb)

PART NUMBER

NXCOL AISI 316L stainless steel pole adapter module

PACKAGE

Model Number	Weight	Dimensions (WxHxL)	Master carton
NXCOL	3.5kg (7.7lb)	14x25.5x20cm (5.5x10x7.9in)	8

NXCW

MECHANICAL

Suitable for NXWBS1, NXWBL, NXWBPTH1

Made of AISI 316L electropolished stainless steel

Load rating: 50kg (110lb)

Dimensions: 180x291mm (7x11.5in)

Unit weight: 1.2kg (2.6lb)

PART NUMBER

NXCW AISI 316L stainless steel corner adapter module

PACKAGE

Model Number	Weight	Dimensions (WxHxL)	Master carton
NXCW	1.3kg (2.8lb)	24x32x24.5cm (9.4x12.6x9.6in)	5

MHXFWCA

MECHANICAL

Ball joint for housings: MVX, MVXT, MVXHD, MHX, MHXT

Suitable for: NXFWBT

Made of AISI 316L electropolished stainless steel

Load rating: 40kg (88lb)

Dimensions: Ø 101.6mm (4in)

Unit weight: 2kg (4.4lb)

PART NUMBER

MHXFWCA AISI 316L stainless steel ball joint

PACKAGE

Model Number	Weight	Dimensions (WxHxL)	Master carton
MHXFWCA	2.5kg (5.5lb)	19x19x19 cm (7.5X7.5X7.5in)	-

NXFWBT

MECHANICAL

Suitable for: MHXFWCA

Suitable to MVX housings only if coupled with MHXFWCA joint

Suitable for NXWBPTH1

Made of AISI 316L electropolished stainless steel

Load rating: 70kg (154lb)

Height: 124mm (4.9in)

Unit weight: 0.9kg (2lb)

PART NUMBER

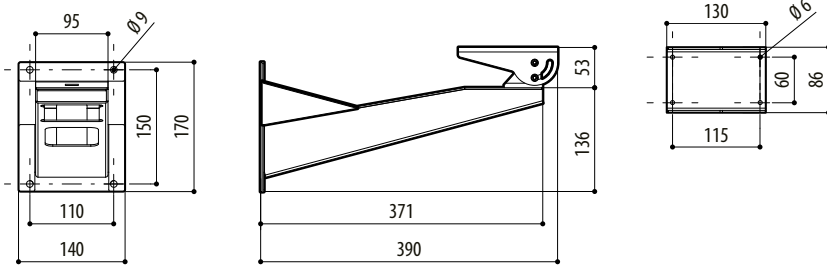
NXFWBT AISI 316L stainless steel parapet mounting bracket

PACKAGE

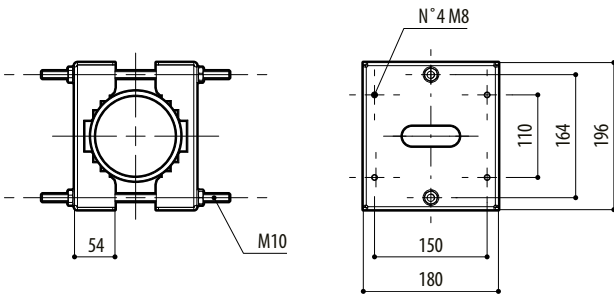
Model Number	Weight	Dimensions (WxHxL)	Master carton
NXFWBT	1kg (2.2lb)	10x16x23cm (4x6x9in)	-

TECHNICAL DRAWINGS

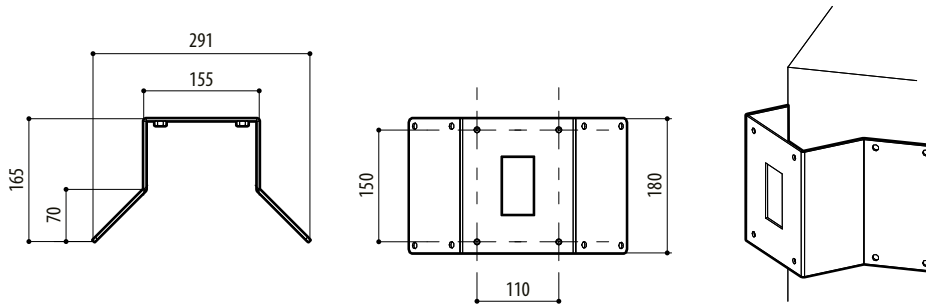
The dimensions of the drawings are in millimetres.



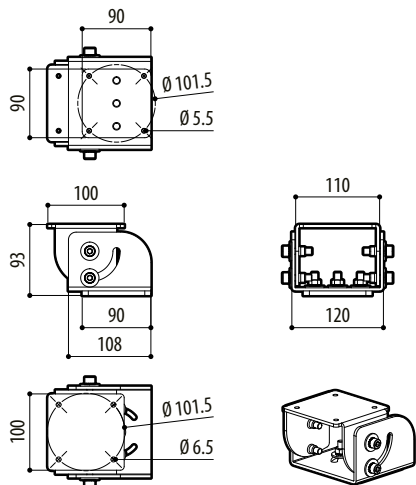
NXWBS1



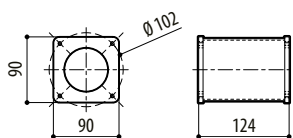
NXCOL



NXCW



MHXFWCA



NXFWBT